



Nextec Co., Ltd.

212-4, Suyang-ri, Gonjam-eup, Gwangju-si,

Gyeonggi-do, Korea

TEL. 82-31-769-5035

FAX. 82-31-769-5034

E-Mail : nextec@nextec.ne.kr

Website : <http://www.nextec.ne.kr>

<http://www.e-nextec.com>



NEXTEC

Next Generation Technology





Next Generation Technology

www.nextec.ne.kr



Message from the **President**

Nextec Co., Ltd. was established in Oct. 2002 and our corporate vision to **“Be The Best!”** drives our Blind Fastener and Industrial Equipment



business. We have received recognition for high product quality and excellence in supplier performance from our customers both within and outside Korea. Our commitment to continuous improvement assures total customer satisfaction and we are strenuously developing new products and new markets. Our strategic alliances in many countries as supplier to the global fastener industry enhances both

our product portfolio and our potential for growth.

President **Lee Young Joon**



ISO/TS16949



ISO 14001



History

2002

- ▶ Established Nextec Co., Ltd.

2003

- ▶ Acquired QS-9000 Certification (Korean Foundation for Quality)

2004

- ▶ Appointed Venture Company (Small and Medium Business Administration)
- ▶ Appointed company of bright prospect export (Small and Medium Business Administration)
- ▶ Appointed professional company for parts (Ministry of Commerce, Industry, and Energy)

2005

- ▶ Expanding the manufacturing Capacity
- ▶ Acquired SQ Certification (Hyun Dai Moter Company)

2006

- ▶ Appointed by Korean Government as a "Frontier Company" (Small And Medium Business Administration)
- ▶ Appointed by Korean Government as a "Annex Development Institute" (Korea Industrial Technology Association)
- ▶ Appointed by Korean Government as a "INNO-BIZ Company" (Small And Medium Business Administration)
- ▶ Acquired TS16949/ISO9001 Certification(Korean Foundation for Quality)
- ▶ Appointed by Korean Government as a Company of "High Growth Status" (Gyeonggi Goverment head)

2007

- ▶ Acquired ISO14001 Certification(Korean Foundation for Quality)

2008

- ▶ NSLMP series(Steel Crimping Rivet) development
- ▶ Launching to Toyota Japan(NSLMP Series)
- ▶ Thin plastic application rivet development

2009

- ▶ Launching to Japan(Rivet for thin plastic application)
- ▶ Auto sorting machine development for blind rivet
- ▶ Market launching to Germany, Italy and other European markets(NXP Series)
- ▶ Million Dollar Export Tower Award

2010

- ▶ Expansion of 2nd plant (assembly line extensions)
- ▶ 3 Million Dollar Export Tower Award

2011

- ▶ Established branch company in Japan, NEXTEC Japan.

With the Newest Technology.
For the best quality and Be globalized.

Aluminum Multi-Grip Blind Rivet 1

※ One fastener can often be used to replace several standard grip fasteners. Accommodates wide variations in material thickness. Suits a wide variety of applications. Reduced fastener inventory and simpler stock control.

●N1661 Series (Low Profile Head)

	Material	Finish
Body	Aluminum Alloy A5052	Polished
Stem	Carbon Steel	Zinc Plated



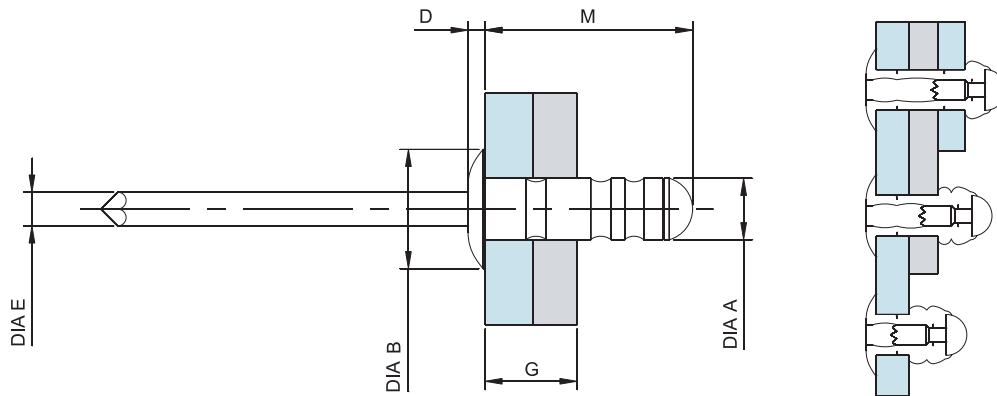
●N1610 Series (Low Profile Head & Black Anodized)

	Material	Finish
Body	Aluminum Alloy A5052	Black Anodized
Stem	Carbon Steel	Zinc Plated



●N1761 Series (Low Profile Head & Painted)

	Material	Finish
Body	Aluminum Alloy A5052	Painted(Color can be assignable)
Stem	Carbon Steel	Zinc Plated



Normal Size	Part Number		G max/min	Hole Size min/max	M max	Dia.A max	Dia.B max	D max	Dia.E max	Typical Strength	
	Form No	Size No								Shear KN	Tensile KN
3.2		00410	0.8-4.8	3.3/3.4	10.4	3.2	6.7	1.3	1.8	0.7	1.0
		00414	4.0-7.9		13.6						
		00416	5.5-9.5		16.0						
		00420	6.0-12.0		18.5						
4.0	N1661 N1610 N1761	00510	0.8-4.7	4.1/4.2	10.7	4.0	8.2	1.6	2.12	1.1	1.6
		00512	1.2-6.3		12.5						
		00516	4.0-10.0		18.3						
		00521	6.4-12.7		19.6						
4.8		00613	1.6-6.3	4.9/5.0	13.9	4.9	10.1	1.8	2.83	1.3	2.3
		00619	4.8-11.1		18.7						
		00621	4.8-12.7		20.2						
		00625	6.4-15.5		23.4						
6.4		00631	12.7-19.8	6.6/6.9	28.2	6.58	14.0	2.7	4.0	3.1	2.4
		00813	1.6/3.5		14.5						
		00815	2.0/5.0		15.8						

Aluminum Multi-Grip Blind Rivet 2

● N1641 Series (Large Flange)

	Material	Finish
Body	Aluminum Alloy A5052	Polished
Stem	Carbon Steel	Zinc Plated



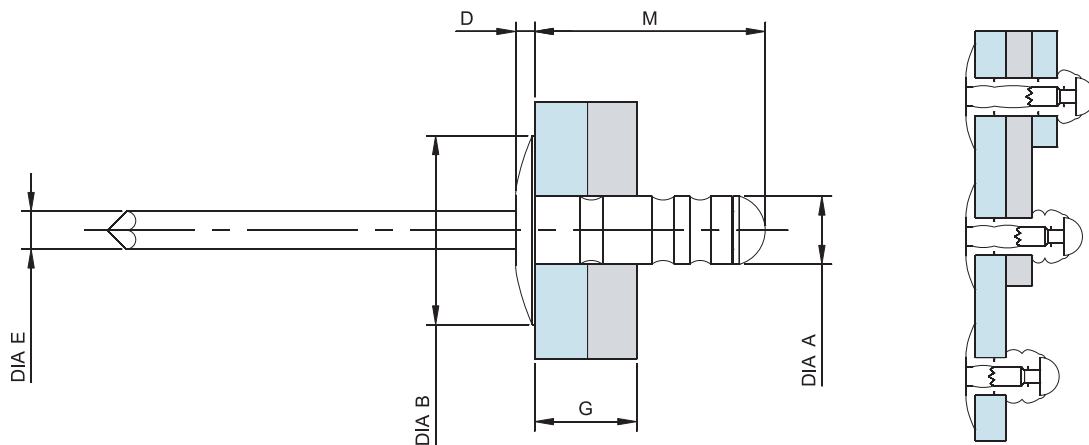
● N1641-4 Series (Large Flange & Black Anodized)

	Material	Finish
Body	Aluminum Alloy A5052	Black Anodized
Stem	Carbon Steel	Zinc Plated



● N1741 Series (Large Flange & Painted)

	Material	Finish
Body	Aluminum Alloy A5052	Painted(Color can be assignable)
Stem	Carbon Steel	Zinc Plated



Normal Size	Part Number		G max/min	Hole Size min/max	M max	Dia.A max	Dia.B max	D max	Dia.E max	Typical Strength	
	Form No	Size No								Shear KN	Tensile KN
3.2		00410	0.8-4.8	3.3/3.4	10.4	3.2	9.0	1.5	1.8	0.7	1.0
		00414	4.0-7.9		13.6						
		00416	5.5-9.5		16.0						
		00420	6.0-12.0		18.5						
4.0	N1641 N1641-4 N1741	00510	0.8-4.7	4.1/4.2	10.7	4.0	12.0	1.9	2.12	1.0	1.6
		00512	1.2-6.3		12.5						
		00516	4.0-10.0		18.3						
		00521	6.4-12.7		19.6						
4.8		00613	1.6-6.3	4.9/5.0	13.9	4.9	16.13	2.2	2.83	1.3	2.1
		00619	4.8-11.1		18.7						
		00621	4.8-12.7		20.2						
		00625	6.4-15.5		23.4						
		00631	12.7-19.8		28.2						

With the Newest Technology.
For the best quality and Be globalized.

Aluminum Multi-Grip Blind Rivet 3

●N1604 Series (120° Countersunk Head)

	Material	Finish
Body	Aluminum Alloy A5052	Polished
Stem	Carbon Steel	Zinc Plated



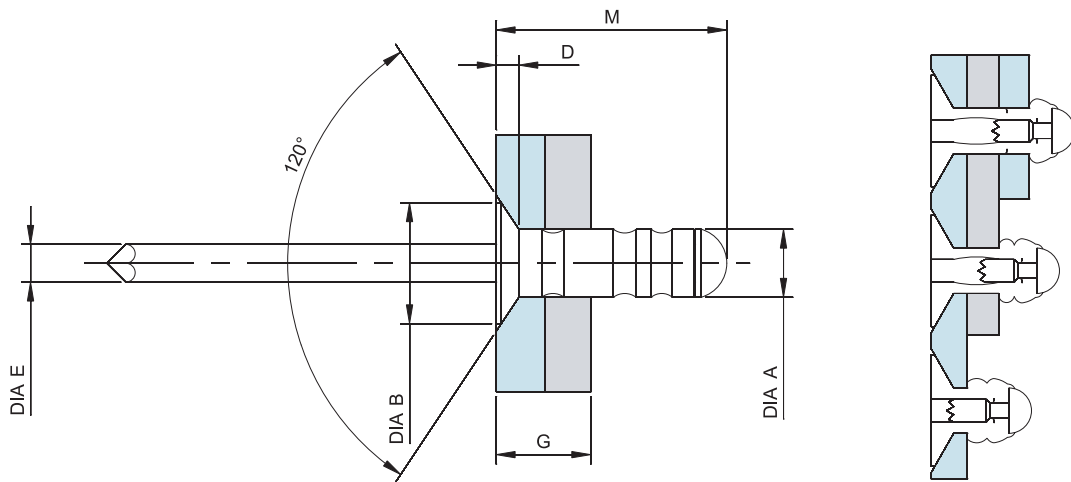
●N1614 Series (120° Countersunk Head & Black Anodized)

	Material	Finish
Body	Aluminum Alloy A5052	Black Anodized
Stem	Carbon Steel	Zinc Plated



●N1704 Series (120° Countersunk Head & Painted)

	Material	Finish
Body	Aluminum Alloy A5052	Painted(Color can be assignable)
Stem	Carbon Steel	Zinc Plated



Normal Size	Part Number		G max/min	Hole Size min/max	M max	Dia.A max	Dia.B max	D max	Dia.E max	Typical Strength	
	Form No	Size No								Shear KN	Tensile KN
3.2	N1604	00412	2.4-6.3	3.3/3.4	12.2	3.2	5.5	1.3	1.8	0.7	1.0
		00414	4.0-7.9		13.4						
4.0	N1614	00514	2.8-7.9	4.1/4.2	14.3	4.0	6.5	1.4	2.12	1.1	1.3
4.8	N1704	00615	3.2-7.9	4.9/5.0	15.5	4.9	8.9	1.8	2.83	1.3	2.3
		00621	6.3-12.7		20.4						



Aluminum Open Type Blind Rivet 1

• NA Series (Low Profile Head)

	Material	Finish
Body	Aluminum Alloy A5154	Polished
Stem	Carbon Steel	Zinc Plated



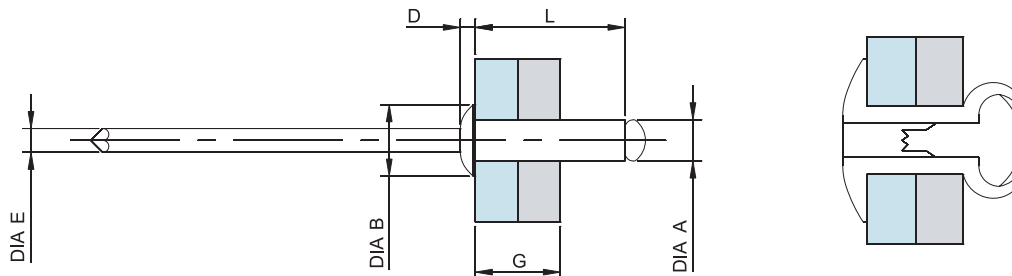
• NAB Series (Low Profile Head & Black Anodized)

	Material	Finish
Body	Aluminum Alloy A5154	Black Anodized
Stem	Carbon Steel	Zinc Plated



• NAP Series (Low Profile Head & Painted)

	Material	Finish
Body	Aluminum Alloy A5154	Painted(Color can be assignable)
Stem	Carbon Steel	Zinc Plated



Normal Size	Part Number		G max/min	Hole Size min/max	L	Dia.A max	Dia.B max	D max	Dia.E max	Typical Strength	
	Form No	Size No								Shear KN	Tensile KN
2.4		00306	0.5-3.2	2.5/2.6	5.5	2.4	4.8	0.9	1.45	0.49	0.74
		00310	3.2-4.8		8.8						
3.2	NA	4-1	1.0-1.6	3.3/3.4	4.4	3.2	6.7	1.3	1.83	0.93	1.45
		4-2	1.6-3.2		6.3						
		4-3	3.2-4.8		8.0						
		4-4	4.8-6.4		9.8						
		4-5	6.4-8.0		11.6						
		4-6	8.0-9.6		13.4						
4.0	NAB	5-2	1.2-3.2	4.1/4.2	6.9	4.0	8.4	1.6	2.23	1.47	2.25
		5-3	3.2-4.8		8.6						
		5-4	4.8-6.4		10.4						
		5-6	6.4-9.6		14.0						
4.8	NAP	6-2	1.6-3.2	4.9/5.0	7.5	4.8	10.1	1.8	2.63	2.15	3.25
		6-3	3.2-4.8		9.3						
		6-4	4.8-6.4		11.1						
		6-6	6.4-9.6		14.7						
		6-8	9.6-12.8		18.2						
		6-10	12.8-16.0		21.6						
		6-12	16.0-19.2		23.5						

With the Newest Technology.
For the best quality and Be globalized.

Aluminum Open Type Blind Rivet 2

•NAL Series (Large Flange)

	Material	Finish
Body	Aluminum Alloy A5154	Polished
Stem	Carbon Steel	Zinc Plated



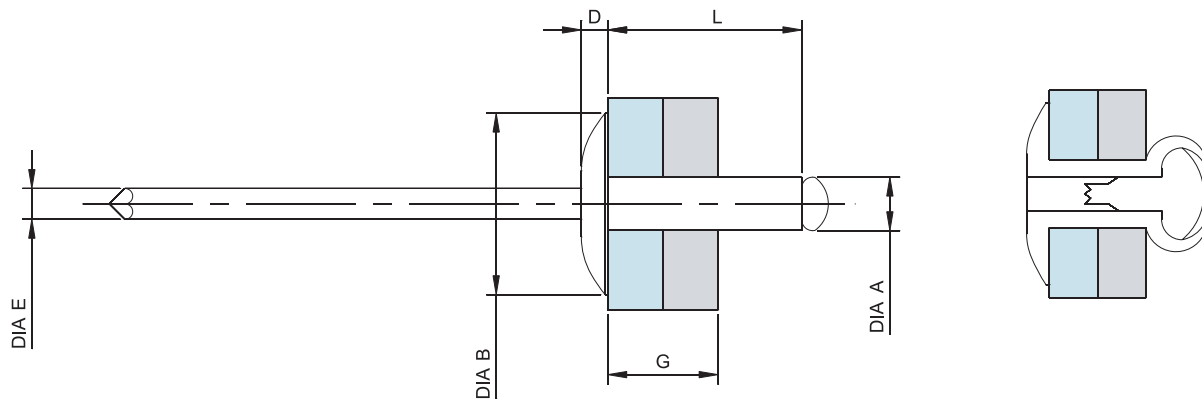
•NALB Series (Large Flange & Black Anodized)

	Material	Finish
Body	Aluminum Alloy A5154	Black Anodized
Stem	Carbon Steel	Zinc Plated



•NALP Series (Large Flange & Painted)

	Material	Finish
Body	Aluminum Alloy A5154	Painted(Color can be assignable)
Stem	Carbon Steel	Zinc Plated



Normal Size	Part Number		G max/min	Hole Size min/max	L	Dia.A max	Dia.B max	D max	Dia.E max	Typical Strength	
	Form No	Size No								Shear KN	Tensile KN
3.2	NAL	4-3	3.2-4.8	3.3/3.4	8.0	3.2	9.0	1.5	1.83	0.88	1.32
		4-4	4.8-6.4		9.8						
		4-5	6.4-8.0		11.6						
		4-6	8.0-9.6		13.4						
		4-8	9.6-12.8		17.0						
4.0	NAL	5-3	3.2-4.8	4.1/4.2	8.6	4.0	12.0	1.9	2.23	1.37	2.15
	NALB	5-4	4.8-6.4		10.4						
	NALP	5-6	6.4-9.6		14.0						
	5-8	9.6-12.8	17.6								
4.8	NAL	6-4	4.8-6.4	4.9/5.0	11.1	4.8	16.13	2.2	2.63	2.26	3.24
		6-6	6.4-9.6		14.7						
		6-8	9.6-12.8		18.2						
		6-10	12.8-16.0		21.6						
		6-12	16.0-19.2		23.5						

Aluminum Open Type Blind Rivet 3

● NAC Series (120° Countersunk Head)

	Material	Finish
Body	Aluminum Alloy A5154	Polished
Stem	Carbon Steel	Zinc Plated



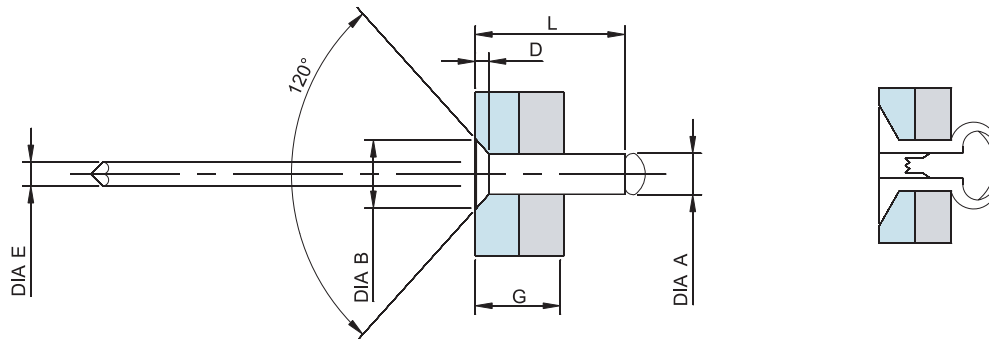
● NACB Series (120° Countersunk Head & Black Anodized)

	Material	Finish
Body	Aluminum Alloy A5154	Black Anodized
Stem	Carbon Steel	Zinc Plated



● NACP Series (120° Countersunk Head & Painted)

	Material	Finish
Body	Aluminum Alloy A5154	Painted(Color can be assignable)
Stem	Carbon Steel	Zinc Plated



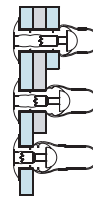
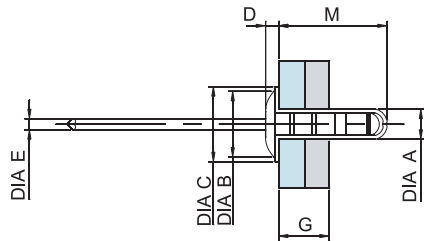
Normal Size	Part Number		G max/min	Hole Size min/max	L	Dia.A max	Dia.B max	D max	Dia.E max	Typical Strength	
	Form No	Size No								Shear KN	Tensile KN
3.2		4-3	3.2-4.8	3.3/3.4	8.0	3.2	5.5	1.3	1.83	0.88	1.32
		4-4	4.8-6.4		9.8						
		4-5	6.4-8.0		11.6						
		4-6	8.0-9.6		13.4						
		4-8	9-6-12.8		17.0						
4.0	NAC NACB NACP	5-2	1.2-3.2	4.1/4.2	6.9	4.0	6.5	1.3	2.23	1.37	2.15
		5-3	3.2-4.8		8.6						
		5-4	4.8-6.4		10.4						
		5-6	6.4-9.6		14.0						
		5-8	9.6-12.8		17.6						
4.8		6-2	1.6-3.2	4.9/5.0	7.5	4.8	8.9	1.8	2.63	2.26	3.24
		6-3	3.2-4.8		9.3						
		6-4	4.8-6.4		11.1						
		6-6	6.4-9.6		14.7						
		6-8	9.6-12.8		18.2						
		6-10	12.8-16.0		21.6						
		6-12	16.0-19.2		23.5						

With the Newest Technology.
For the best quality and Be globalized.

Aluminum Multi-Grip PCB Rivet

●Plastic Cap Blind Rivet (Semilarge Flange & Plastic Cap)

	Material	Finish
Body	Aluminum Alloy A5052	Polished
Stem	Carbon Steel	Zinc Plated
CAP	Nylon	Natural



Normal Size	Part Number		G max/min	Hole Size min/max	M max	Dia.A max	Dia.B max	Dia.C max	D max	Dia.E max	Typical Strength	
	Form No	Size No									Shear KN	Tensile KN
3.2												
4.0	N1631	00521	4.7-10.7	4.9/5.0	20.0	4.9	11.0	12.0	3.0	2.12	1.1	1.6
4.8												

※ PCB Rivet is the highly effective product for water-resistant, and anti-vibration.

Aluminum Folding Type Blind Rivet

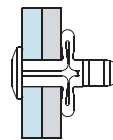
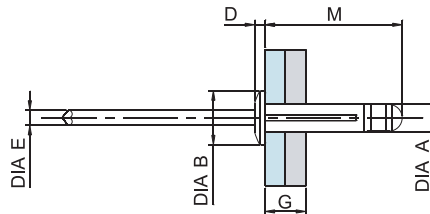
●KBF01 Series(Low Profile Head)

	Material	Finish
Body	Aluminum Alloy A5052	Polished
Stem	Aluminum Alloy A5056	Polished



●KBF11 Series(Low Profile Head & Black Anodized)

	Material	Finish
Body	Aluminum Alloy A5052	Black Anodized
Stem	Aluminum Alloy A5056	Polished



Normal Size	Part Number		G max/min	Hole Size min/max	M max	Dia.A max	Dia.B max	D max	Dia.E max	Typical Strength	
	Form No	Size No								Shear KN	Tensile KN
4.0	KBF01	00516	1.0/3.0	4.2/4.5	16.0	4.2	8.2	1.6	2.3	0.6	1
		00523	1.0/7.0		21.2						
		00619	1.0/4.0		18.3						
4.8	KBF11	00625	1.0/9.0	5.0/5.3	23.3	5.0	10.1	2.1	3.0	0.8	1.1
		00630	4.0/12.0		27.1						

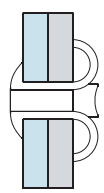
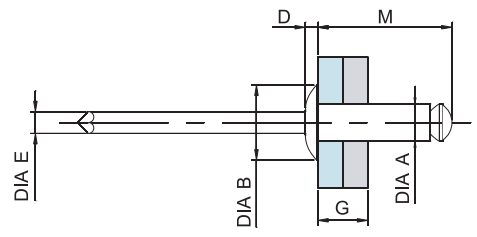
※ Both Stem/Body anodizing is also available.
※ Painted Aluminum Folding Type Blind rivets are also available.



Peel Type Blind Rivet

Aluminium Peel Rivet

	Material	Finish
Body	Aluminum Alloy A5154	Polished
Stem	Carbon Steel	Zinc Plated

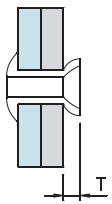
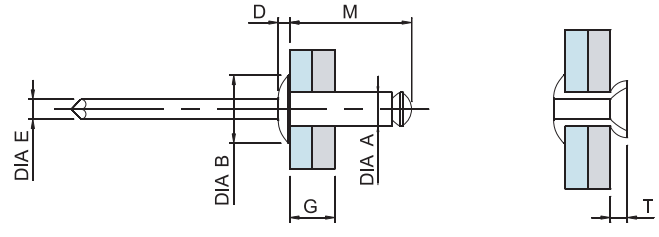


Normal Size	Part Number		G max/min	Hole Size min/max	M max	Dia.A max	Dia.B max	D max	Dia.E max	Typical Strength	
	Form No	Size No								Shear KN	Tensile KN
4.0	NPE	00511	1.2/4.5	4.2	11.8	4.18	8.2	1.6	2.35	1.46	1.26
4.8	NPE	00613	1.6/4.5	5	13	4.98	10.1	1.8	2.70	2.25	2.05

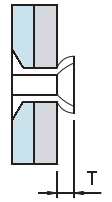
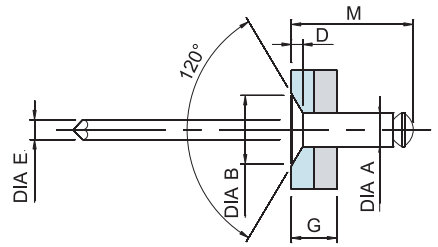
Ejector Type Blind Rivet

Aluminium Ejector Stem Rivet

	Material	Finish
Body	Aluminum Alloy A5154	Polished
Stem	Carbon Steel	Zinc Plated



Normal Size	Part Number		G max/min	Hole Size	M max	Dia.A max	Dia.B max	D max	Dia.E max	T	Typical Strength	
	Form No	Size No									Shear KN	Tensile KN
4.0	NEP	005XX	-	4.2	-	4.15	8.2	1.6	2.25	1.8	-	-
4.8	NEP	006XX	-	5	-	4.98	10.1	1.8	2.72	2.0	-	-



Normal Size	Part Number		G max/min	Hole Size	M max	Dia.A max	Dia.B max	D max	Dia.E max	T	Typical Strength	
	Form No	Size No									Shear KN	Tensile KN
3.2	NEC	004XX	-	3.4	-	3.38	6.4	1.1	1.83	1.5	-	-

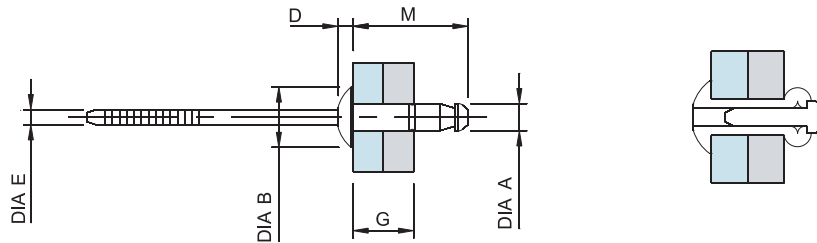
With the Newest Technology.
For the best quality and Be globalized.

Stainless Blind Rivet 1

※ Provides high corrosion resistance and high shear and tensile strength. Ideal for application requiring elevated temperatures.

•NXP Series (Dome Head)

	Material	Finish
Body	Stainless Steel	Natural
Stem	Stainless Steel	Natural

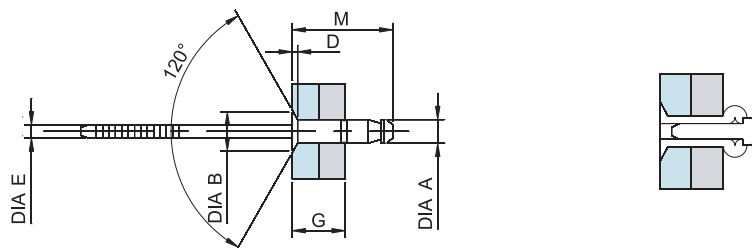


Normal Size	Part Number		G max/min	Hole Size min/max	M max	Dia.A max	Dia.B max	D max	Dia.E max	Typical Strength	
	Form No	Size No								Shear KN	Tensile KN
3.2	NXP	00408	1.0-3.0	3.3/3.4	8.9	3.3	6.6	1.1	2.2	1.6	2.0
		00411	3.0-5.0		11.4						
		00414	5.0-7.0		13.6						
4.0	NXP	00509	1.0-3.0	4.1/4.3	10.1	4.1	8.0	1.5	2.7	5.2	4.0
		00512	3.0-5.0		12.5						
		00516	5.0-7.0		15.1						
4.8	NXP	00611	1.5-3.5	4.9/5.1	12.9	4.9	9.6	1.6	3.3	5.5	5.0
		00614	3.5-6.0		15.5						
		00618	6.0-8.5		18.5						
		00622	8.5-11.0		20.6						

Stainless Blind Rivet 2

•NXC Series (120° Countersunk Head)

	Material	Finish
Body	Stainless Steel	Natural
Stem	Stainless Steel	Natural



Normal Size	Part Number		G max/min	Hole Size min/max	M max	Dia.A max	Dia.B max	D max	Dia.E max	Typical Strength	
	Form No	Size No								Shear KN	Tensile KN
3.2	NXC	00410	2.0-4.0	3.3/3.4	10.3	3.28	6.5	1.2	2.2	1.6	2.0
4.0		00512	3.0-5.0	4.1/4.3	13.2	4.08	8.0	1.4	2.7	5.2	4.0
4.8		00614	3.5-6.0	4.9/5.1	15.5	4.9	9.6	1.6	3.3	5.5	5.0

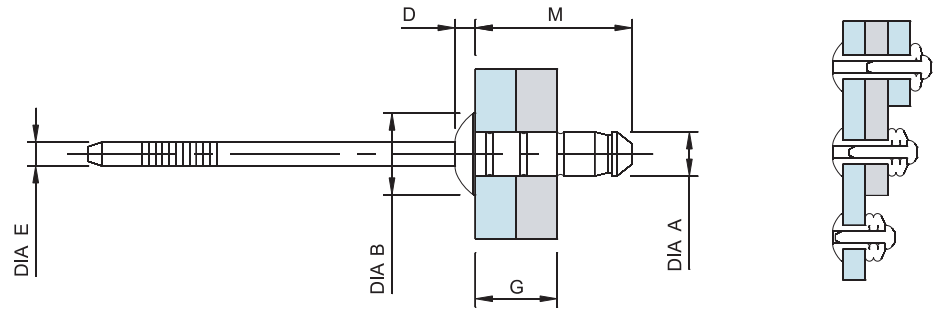


Stainless Multi-Grip Blind Rivet 1

※ One fastener can often be used to replace several standard grip fasteners. Accommodates wide variations in material thickness. Suits a wide variety of applications. Reduced fastener inventory and simpler stock control.

●NXPM Series (Dome Head)

	Material	Finish
Body	Stainless Steel	Natural
Stem	Stainless Steel	Natural

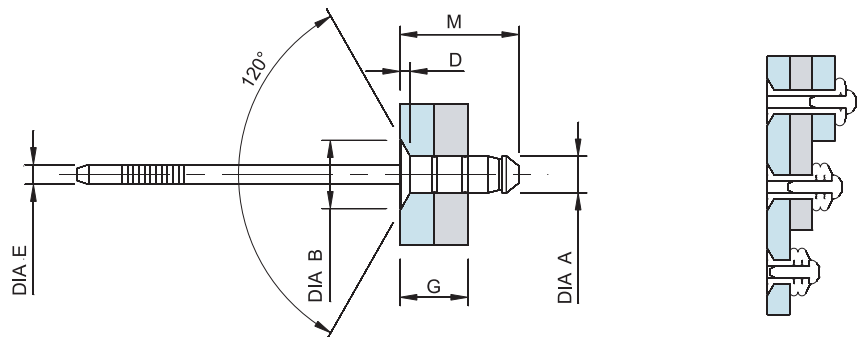


Normal Size	Part Number		G max/min	Hole Size min/max	M max	Dia.A max	Dia.B max	D max	Dia.E max	Typical Strength		
	Form No	Size No								Shear KN	Tensile KN	
3.2	NXPM	00414	1.0-7.0	3.3/3.4	14.2	3.3	7.6	1.1	2.2	1.7	2.2	
4.0		00516	2.0-8.0	4.1/4.3	15.1	4.1	8.4	1.5	2.7	2.7	3.4	
4.8		00611	1.5-5.1	4.9/5.1	12.2	13.7	4.9	10.1	1.6	3.2	4.5	5.0
		00614	1.5-6.3									
		00618	1.5-9.5		17.0							

Stainless Multi-Grip Blind Rivet 2

●NXCM Series (120° Countersunk Head)

	Material	Finish
Body	Stainless Steel	Natural
Stem	Stainless Steel	Natural



Normal Size	Part Number		G max/min	Hole Size min/max	M max	Dia.A max	Dia.B max	D max	Dia.E max	Typical Strength	
	Form No	Size No								Shear KN	Tensile KN
3.2	NXCM										
4.0											
4.8		00618	2.4-9.5	4.9/5.0	17.5	4.9	8.8	1.6	3.3	4.5	5.0

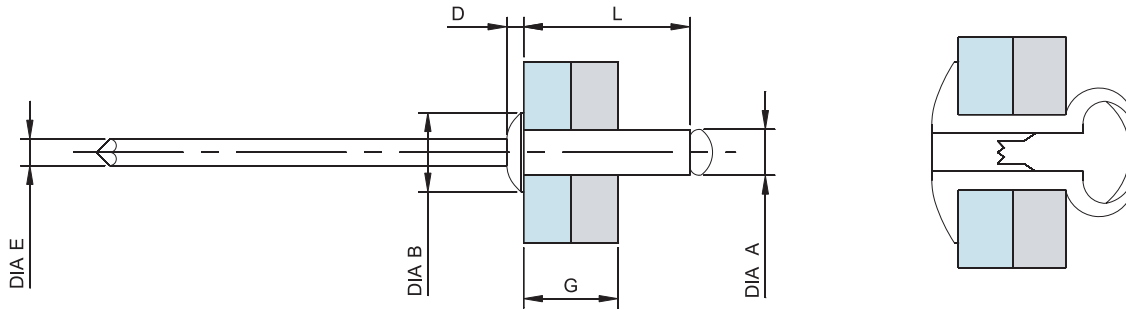
With the Newest Technology.
For the best quality and Be globalized.

Stainless Open Type Blind Rivet

※ Provides high shear and tensile strength.

●NXPO Series (Low Profile Head)

	Material	Finish
Body	Stainless Steel	Natural
Stem	Stainless Steel	Natural



Normal Size	Part Number		G max/min	Hole Size min/max	L	Dia.A max	Dia.B max	D max	Dia.E max	Typical Strength	
	Form No	Size No								Shear KN	Tensile KN
3.2											
4.0	NXPO	D0514	5.0-7.0	4.1/4.2	11.6	4.09	9.2	1.4	2.6	3.0	3.4
4.8											

※ All black Cr+3 plated blind rivet are also available.

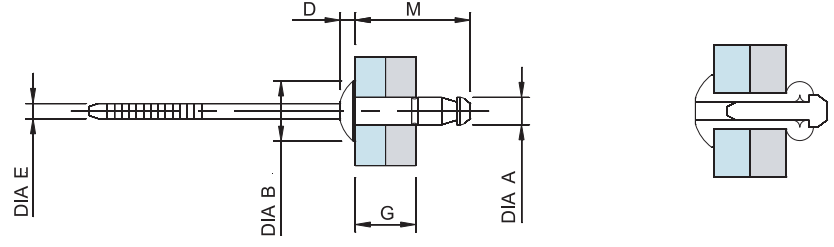


Steel Blind Rivet 1

※ Provides high shear and tensile strength.

●NSP Series (Dome Head)

	Material	Finish
Body	Carbon Steel	Zinc Plated
Stem	Carbon Steel	Zinc Plated

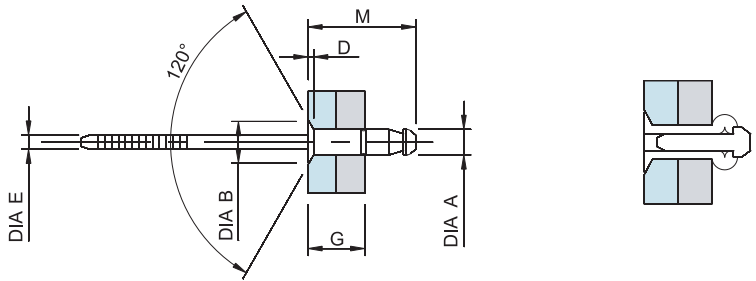


Normal Size	Part Number		G max/min	Hole Size min/max	M max	Dia.A max	Dia.B max	D max	Dia.E max	Typical Strength	
	Form No	Size No								Shear KN	Tensile KN
3.2	NSP	00408	1.0-3.0	3.3/3.4	8.9	3.3	6.8	1.1	2.1	1.2	1.3
		00411	3.0-5.0		11.4						
		00414	5.0-7.0		13.6						
4.0	NSP	00509	1.0-3.0	4.1/4.3	10.1	4.1	8.2	1.5	2.6	2.4	2.8
		00512	3.0-5.0		12.5						
		00516	5.0-7.0		15.1						
4.8	NSP	00611	1.5-3.5	4.9/5.1	12.9	4.9	10.0	1.6	3.2	3.6	3.8
		00614	3.5-6.0		15.5						
		00618	6.0-8.5		18.5						
		00622	8.5-11.0		20.6						
6.4		00816	3.0-6.0	6.5/6.6	17.2	6.48	13.2	2.8	4.2	5.0	5.4

Steel Blind Rivet 2

●NSC Series (120° Countersunk Head)

	Material	Finish
Body	Carbon Steel	Zinc Plated
Stem	Carbon Steel	Zinc Plated



Normal Size	Part Number		G max/min	Hole Size min/max	M max	Dia.A max	Dia.B max	D max	Dia.E max	Typical Strength	
	Form No	Size No								Shear KN	Tensile KN
3.2	NSC	00410	2.0-4.0	3.3/3.4	10.3	3.28	6.5	1.2	2.2	1.2	1.3
4.0		00512	3.0-5.0	4.1/4.3	13.2	4.08	8.0	1.4	2.7	2.4	2.8
4.8		00614	3.5-6.0	4.9/5.1	15.5	4.9	9.6	1.6	3.3	3.6	3.8

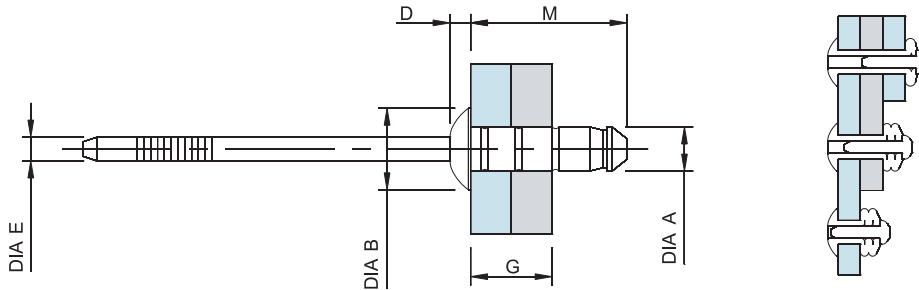
With the Newest Technology.
For the best quality and Be globalized.

Steel Multi-Grip Blind Rivet 1

※ One fastener can often be used to replace several standard grip fasteners. Accommodates wide variations in material thickness. Suits a wide variety of applications. Reduced fastener inventory and simpler stock control.

●NSPM Series (Dome Head)

	Material	Finish
Body	Carbon Steel	Zinc Plated
Stem	Carbon Steel	Zinc Plated

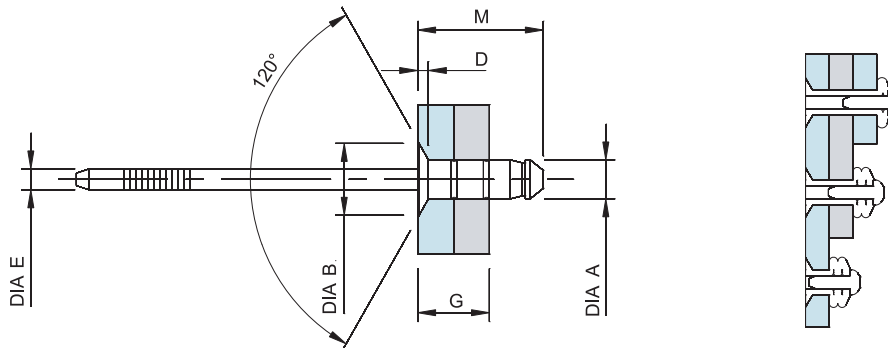


Normal Size	Part Number		G max/min	Hole Size min/max	M max	Dia.A max	Dia.B max	D max	Dia.E max	Typical Strength		
	Form No	Size No								Shear KN	Tensile KN	
3.2	NSPM	00414	1.0-7.0	3.3/3.4	14.2	3.3	7.6	1.1	2.2	1.0	1.4	
4.0		00516	2.0-8.0	4.1/4.3	15.1	4.1	8.4	1.5	2.7	1.5	2.0	
4.8		00611	1.5-5.1	4.9/5.1	12.2	13.7	4.9	10.1	1.6	3.3	2.7	2.9
		00614	1.5-6.3									
6.4		00618	1.5-9.5	6.5/6.6	17.0	19.0	6.48	13.2	2.8	4.2	3.1	3.6
	00818	1.5-7.6										

Steel Multi-Grip Blind Rivet 2

●NSCM Series (120° Countersunk Head)

	Material	Finish
Body	Carbon Steel	Zinc Plated
Stem	Carbon Steel	Zinc Plated



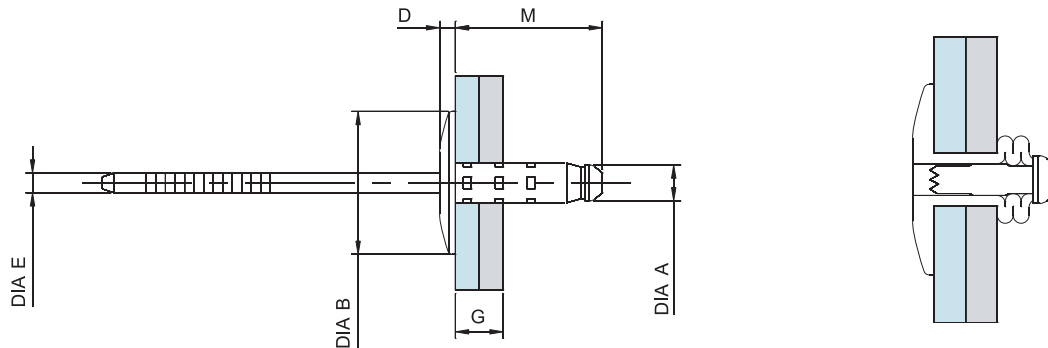
Normal Size	Part Number		G max/min	Hole Size min/max	M max	Dia.A max	Dia.B max	D max	Dia.E max	Typical Strength	
	Form No	Size No								Shear KN	Tensile KN
3.2	NSCM										
4.0											
4.8		00618	2.4-9.5	4.9/5.0	17.5	4.9	8.8	1.6	3.3	2.7	2.9



Crimping Type Multi-Grip Steel Blind Rivet 1

●NSLMP Series (Large Flange)

	Material	Finish
Body	Carbon Steel	Zinc Plated
Stem	Carbon Steel	Zinc Plated



Normal Size	Part Number		G max/min	Hole Size min/max	M max	Dia.A max	Dia.B max	D max	Dia.E max	Typical Strength	
	Form No	Size No								Shear KN	Tensile KN
4.8	NSLMP	03614	1.5/6.3	4.9/5.0	13.9	4.88	16.4	2.2	3.0	2.6	2.8
		03618	1.5/9.5		17.2						
		03622	6.4/12.7		20.3						

※ Black Cr+3 plated blind rivet are also available.

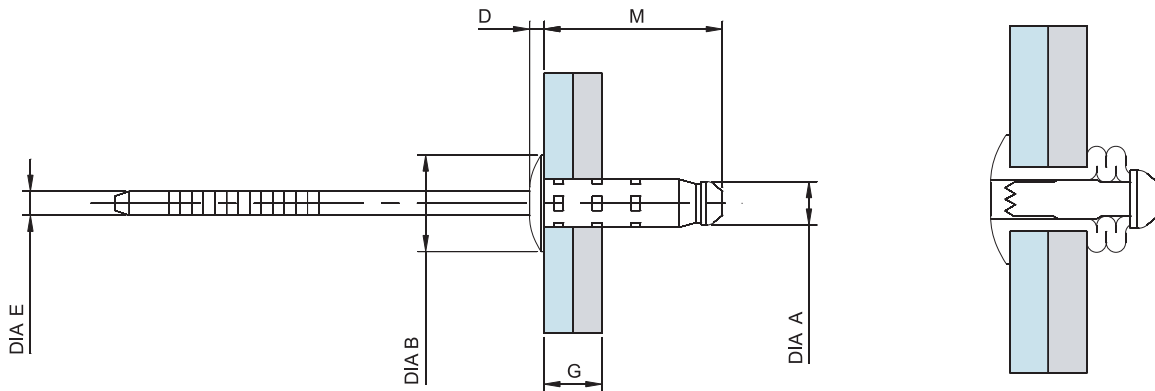


With the Newest Technology.
For the best quality and Be globalized.

Crimping Type Multi-Grip Steel Blind Rivet 2

● NSMP Series (Low Profile Head)

	Material	Finish
Body	Carbon Steel	Zinc Plated
Stem	Carbon Steel	Zinc Plated



Normal Size	Part Number		G max/min	Hole Size min/max	M max	Dia.A max	Dia.B max	D max	Dia.E max	Typical Strength	
	Form No	Size No								Shear KN	Tensile KN
4.0	NSMP	03516	2.0/8.0	4.1/4.2	16.2	4.09	8.4	1.5	2.8	1.53	2.0
		03614	1.5/6.3	4.9/5.0	13.9	4.88	10.1	1.7	3.0	2.6	2.8
		03618	1.5/9.5		17.2						
		03622	6.4/12.7	20.3							

※ Black Cr+3 plated blind rivet are also available.

